

Amota Processing

Sample 658-102623-010

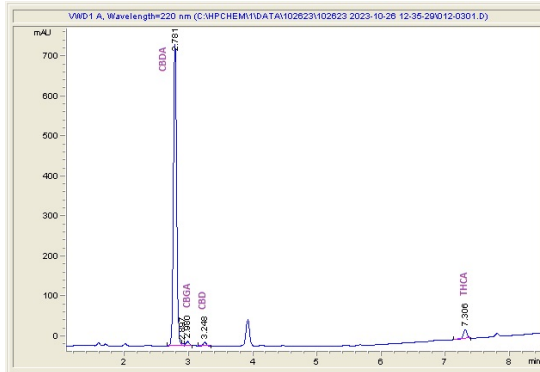
Blue Orchid

Sample Submitted: 10-26-2024; Report Date: 11-01-2024

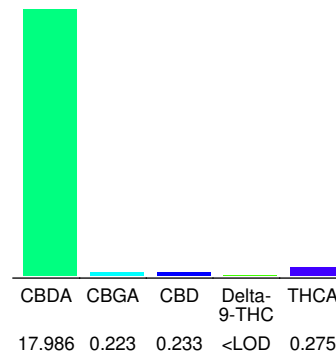
**Blue Orchid**

Plant Material: Hemp Flower

**Chromatogram**



**Cannabinoid Profile**



**Cannabinoid Profile by HPLC**

**0.00%**  
Delta-9-THC

**0.23%**  
CBD

**19.02%**  
Total Cannabinoids

Cannabinoid	% wt	mg/g
CBDA	17.99	179.86
CBGA	0.223	2.23
CBD	0.233	2.33
Delta-9-THC	<LOD	<LOD
THCA	0.275	2.75
<b>Total Cannabinoids</b>	<b>19.02</b>	<b>190.2</b>
<b>Calculated Total THC</b>	<b>0.50</b>	<b>5.04</b>
<b>Calculated CBD Yield</b>	<b>16.01</b>	<b>160.07</b>

Calculated Total THC = Delta-9-THC + 0.877 \* THCA  
 Calculated Maximum CBD Yield = CBD + 0.877 \* CBDA

**Notes:** Delta-9 THC LOD: 0.001%

**Marin Analytics, LLC**  
 250 Bel Marin Keys Blvd, Suite D4  
 Novato, CA 94949  
 833-321-TEST / info@marinanalytics.com

**Mike Clemmons**  
 Lab Manager

This sample has been tested by Marin Analytics, LLC using valid testing methodologies and a quality system. Values reported relate only to the sample tested. Marin Analytics, LLC makes no claims as to the efficacy, safety, or other risks associated with any detected or non-detected levels of any compounds reported herein. This Certificate shall not be reproduced except in full without the written approval of Marin Analytics, LLC. Copyright 2024 Marin Analytics, LLC All Rights Reserved.